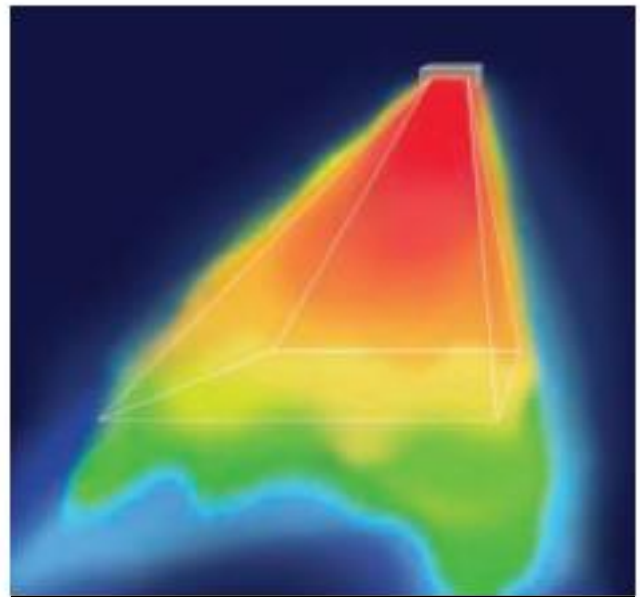


# TANSUN – HEATER COMPARISONS

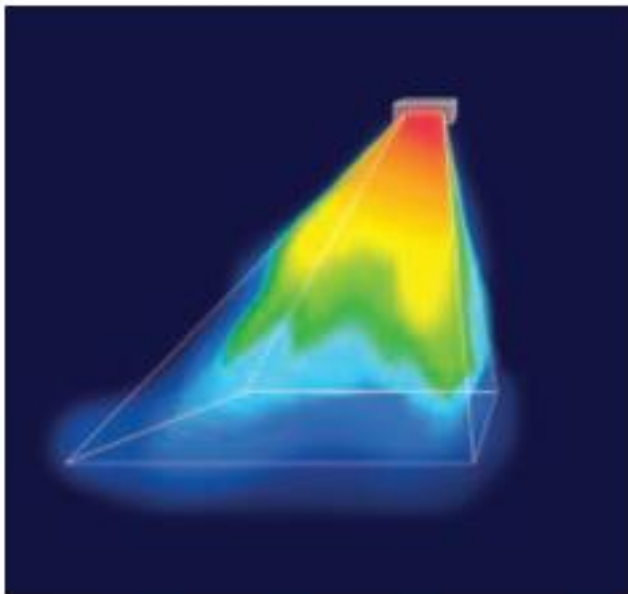
Below are heat coverage diagrams for Tansun heaters compared with standard quartz heaters and gas heaters. No other form of heating will give the same performance and coverage of a Tansun full shortwave heater.

TANSUN QUARTZ FULL SHORTWAVE INFRARED HEATER



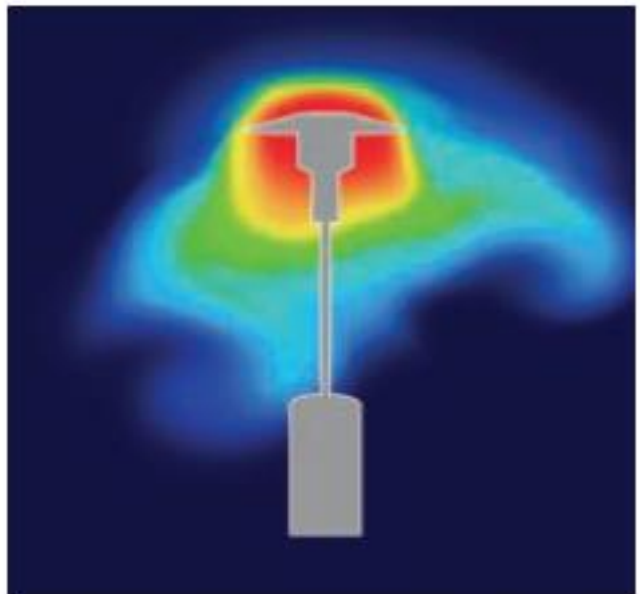
- 96% of energy consumed is direct heat radiation.
- Heat is directed to the person/object below, and next to no heat is lost to the air.

STANDARD QUARTZ HEATER



- 60% of energy consumption is directed heat radiation.
- Heat is not projected outwards in the same way as a Tansun full shortwave heater and does not warm objects and people below.

GAS 'MUSHROOM' HEATER



- 40% of the energy consumed is direct heat radiation.
- Heat dissipates not far from the heater and blows around with the air.